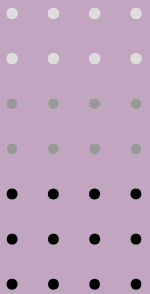




OvILITE PRiVATE

LTD

SINCE 1997



Company Brief

An Introduction to Ovilite

Established in 1997 by Mr. Minish Agrawal, an accomplished bachelor of engineering graduate from the 1989 batch

26 Years of Experience in Waterproofing encompassing hundreds of projects

Staff strength of over 80 professionals comprising of senior-level managers, seasoned engineers, vigilant supervisors

Specializing in waterproofing, structural steel fireproofing, insulation, and landscape products

Company has executed over 500 projects including 8 Airports, 2 Metros & various Government Projects

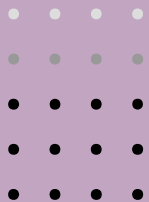
Our efficient infrastructure includes three warehouses in South Delhi, boating a combined storage space of 10,000 sq ft

Address: B-6/1, 3rd Floor, Commercial Complex
Safdarjung Enclave, New Delhi – 110029



Tel: +91 (11) 26183701, +91 (11) 41660609
Email: ovilite@gmail.com

Ovilite's distributor and application partners



Current Product Range

- ❖ Specialized Waterproofing Systems: Offering both Preventive and Remedial solutions.
- ❖ Fireproofing Products: Specially designed for structural steel to enhance safety.
- ❖ Landscape Drainage Solutions: Includes innovative Drainage Boards and Drainage Cells.
- ❖ Expansion Joint Systems: Engineered for durability and safety.
- ❖ Roof and Wall Insulation Products: Efficient solutions for thermal management.
- ❖ Acoustical Products: Comprising Acoustical Plasters and Acoustical Membranes for superior soundproofing.
- ❖ Grass Track Pavers: Ideal for fire tender pathways and parking areas, ensuring stability and aesthetics.
- ❖ Vertical Garden Systems: Transforming spaces with eco-friendly and visually appealing solutions.
- ❖ Anti-carbonation coating: For bridges and via ducts.
- ❖ Flooring: Industrial and commercial flooring systems.
- ❖ Bridge deck waterproofing systems: Protecting bridge structures.

Basement Waterproofing

Raft and Retaining Wall

Basement waterproofing is very challenging - hence we use our advanced technology & expertise in basement waterproofing.



Fully Bonded
HDPE
Membrane



Crystalline
Coating /
Brickbat



Self Adhesive
Membrane



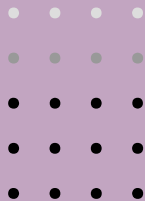
EPDM
Membrane



APP
Membrane



Polyuria / PU
COATING



Basement Waterproofing Service



Podium Waterproofing

01 Polyurethane / Polyurea Coating

02 SBS Membrane

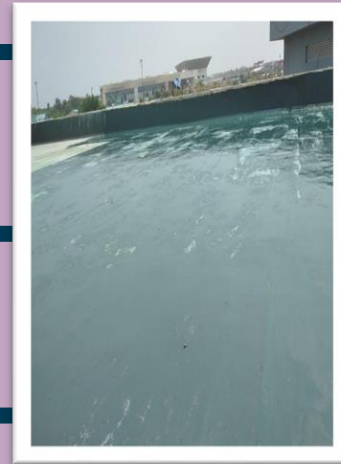
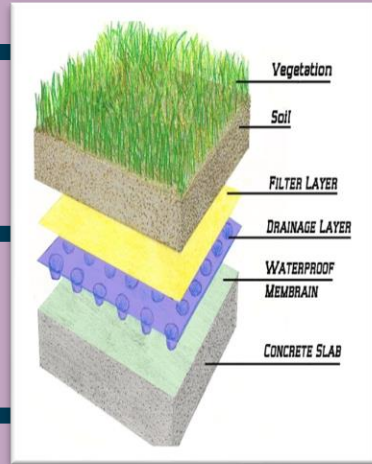
03 Drainage Board

04 APP Membrane



Podium Waterproofing

Real-Life Applications



Roof / Terrace Waterproofing



Polyurethane/
Spray Applied
Polyurea



Spray Applied
Puff
Insulation



Top
Membrane



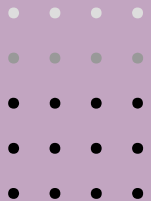
SBS
Membrane



APP
Membrane

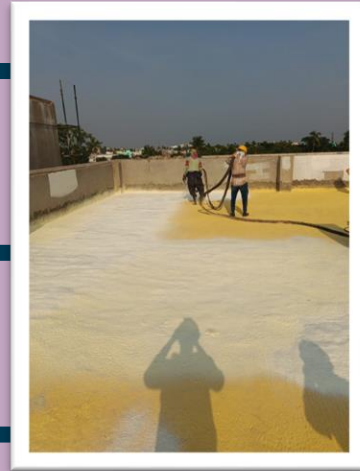


Brickbat Coba



Roof / Terrace Waterproofing

Real-Life Applications

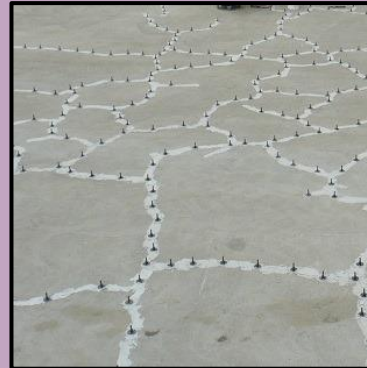


Roof / Terrace Waterproofing

PU
Injection
Grouting

Epoxy
Injection
Grouting

Cementitious
Injection
Grouting

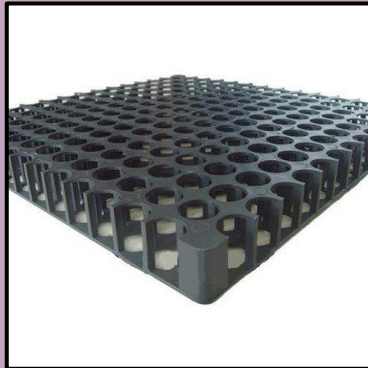


Landscape Products

Drain
Cell

HDPE
Grass
Paver

Drainage
Boards



Fireproofing

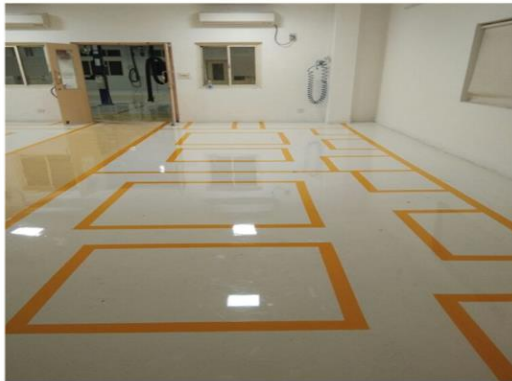
We provided fireproofing for steel structures tailored to the ratings required



These encompass **Spray Applied Steel Structural Vermiculite Fireproofing** and **Intumescent Paint Fireproofing**

Flooring

Real-Life Applications



These encompass Epoxy Flooring and PU Flooring

Anti-Carbonation Coating

Real-Life Applications



Major Ongoing Projects



**IICC Dwarka,
New Delhi**



**Netaji Nagar,
New Delhi**



**SCB Medical
College, Cuttack**



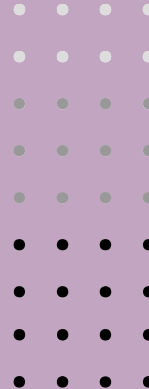
**Executive
Enclave, New
Delhi**



**PMCH Patna,
Bihar**



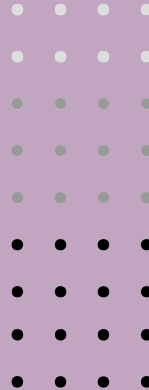
**Basu Patna,
Bihar**



Major Ongoing Projects



**Lucknow Airport,
UP**



**AIIMS Jodhpur,
Rajasthan**



**Jodhpur Airport,
Rajasthan**

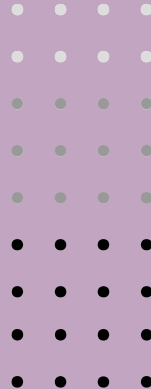


NIT Patna, Bihar

Completed Projects*



**Jaipur Airport,
Rajasthan**



**Kolkata Airport,
West Bengal**



**Varanasi Airport,
Uttar Pradesh**



**Patna Airport,
Bihar**



**ITPO Pragati
Maidan, New
Delhi**

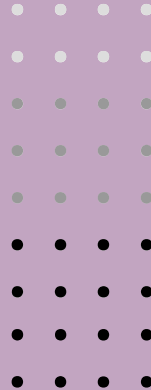


**Mangalore
Airport,
Karnataka**

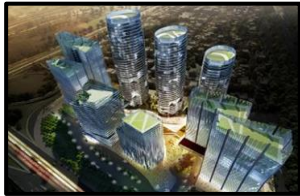
Completed Projects*



**TCS Rajarhat
Kolkata, West
Bengal**



**Intl Bus Terminal
Mohali, Punjab**



**3C Delhi One,
New Delhi**



**IREO Grand Arch
Gurgaon,
Haryana**



**Pioneer Araya
Gurgaon,
Haryana**



**Park Hotel,
Hyderabad**

Completed Projects*



**Express Trade
Tower, New
Delhi**



**Jawaharlal Nehru
Stadium, New
Delhi**



**GIP Waterpark
Worlds of
Wonder Noida,
Haryana**



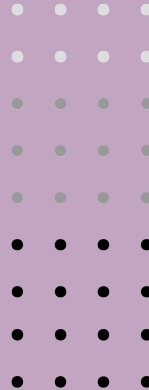
**SNP IT Park
Chennai, Tamil
Nadu**



**Biodiversity
Conservation India
Ltd, Bangalore,
Karnataka**

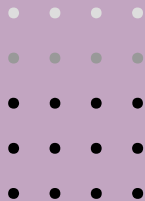
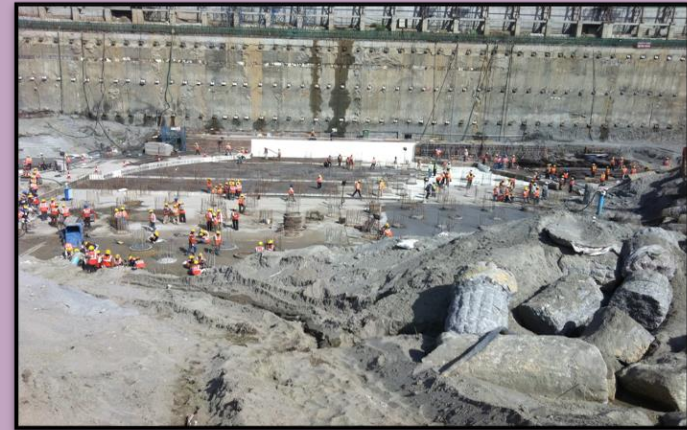
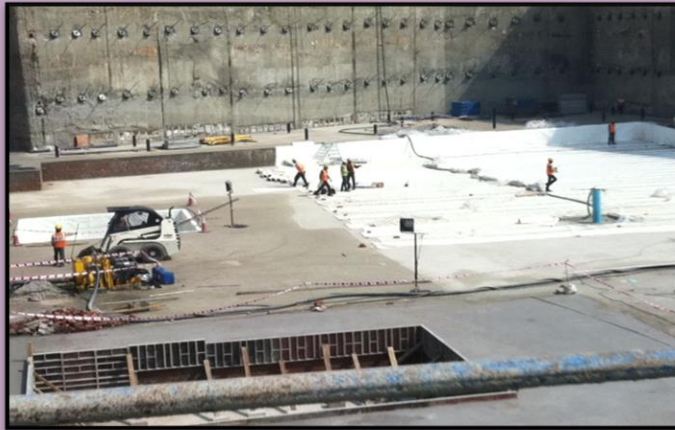


**RPS Green Valley
Faridabad,
Haryana**



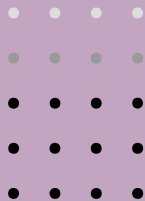
Case Study – 3C Project Noida

Ovilite successfully completed the project in Noida despite facing various water level challenges. The project was particularly challenging due to a water level of 1 meter, and the construction involved digging 11 meters down, resulting in two basements. Essentially, the 10-meter structure was consistently submerged in water. The waterproofing was accomplished using Grace Products.



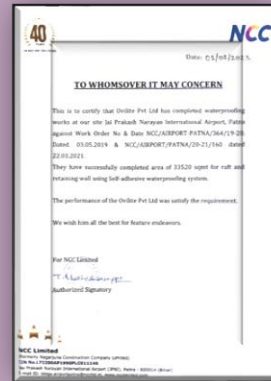
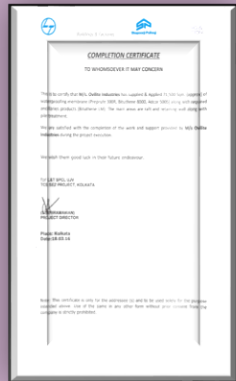
Case Study – Kolkata Airport

One work constituted 80% of the total area/quantity of waterproofing undertaken at Kolkata Airport, involving 175,000 square meters, completed using Grace products.



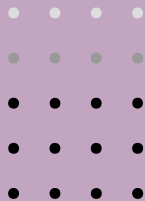
Completion Certificates

These certificates serve as a testament to our unwavering dedication to our clients and our commitment to delivering top-quality work.



Award Certificates

Celebrating Excellence: A Showcase of Our Award-Winning Achievements





Ovivilite